

**1920x1080 Native Resolution**  
**3G/HD-SDI, HDMI/DVI/VGA, Composite & Component**

## KVM-4250W

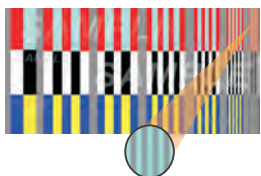


The KVM-4250W is a versatile monitor that supports full video formats including 3G/HD-SDI signals and professional features. Utilizing the IPS LCD panel and combined with excellent 10bit video processing technology, it provides outstanding accurate colors and rich professional features.

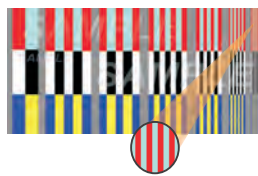
## | Main Features

### Advanced processing technology

High-end 10bit video processing engine ensures clear and smooth picture quality. e.g. Feed professional chroma burst testing signals, the right top side slim red lines should be same the left side thick red lines, and clear display.



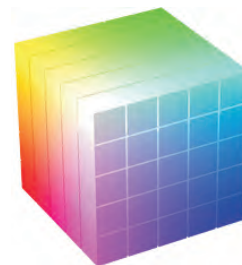
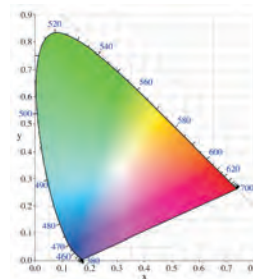
Other monitors:  
the slim red lines turn to gray color wrongly, also flickering and blurred display.



Konvision monitors:  
same red color well and clear display.

### Accurate color reproduction

IPS LCD Panel, excellent color calibration technology, color temperature adjustment, all of these benefit Konvision monitors with accurate and standardized color reproduction.



## Multi Signal Formats

Support all signal sources HDMI/DVI/VGA Input, Composite, Video, Component, S Video Input and Output



## 2 SDI Inputs&Outputs

2x SDI Inputs  
2x SDI Outputs  
3G/HD/SD-SDI Auto detected



## Picture Flip

Horizontal picture flip function allows negative image, is very useful in the studios/virtual studios, such as weather forecast, news and other programs, etc



## Convenient Buttons&Knobs



Multi functional control buttons and navigation turning knobs for easy operation

## Waveform & Vector & Histogram

Waveform, Wide Type Waveform (waveform alarm support), Vectorscope, Histogram & RGB Histogram all display on screen at same time



Wide Type Waveform



Waveform/Vectorscope/Histogram

## Part Zoom In

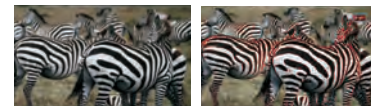
Part zoom in function aims to show image details more clearly. Combining focus assist and part zoom in functions will be more helpful for accurate focus



False Signal

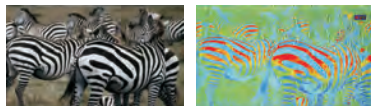
## Focus Assist

The silhouettes of objects in the picture will be emphasized, to assist you to focus manually more easily



## False Color

This function is to aid in the setting of camera exposure for over expose, under expose and proper expose



## PIP/PBP Mode

Support 2 SDI signals display at same time, also one SDI with any other signals of Video, HDMI/DVI/VGA. Two pictures can freely swap between each other



PIP

PBP

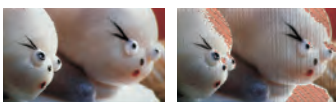
## Pixel Measurement

Select any single pixel or block of pixels using a movable crosshair to obtain real time readouts of the YRGB values for that position to get real time YRGB measurement values and compare them

Measure	Unit	Sample	R	G	B	C	Y	UV	UV	UV
Current	0550	0000	0110	000	0571	0071	150	111	112	113
Ref.Cam	0550	0010	0120	002	0000	0000	150	111	112	113
Diff			-0107	-012	0000	-0000	000	-012	-007	-007

## Zebra

To appear over areas of the picture that are over exposed (too bright)



## Various Markers&Time Code

Safety Marker, UMD, Audio Level Meter, Time Code



## More Features

Embedded audio meter, UMD, Blue only/Mono, Fast Mode, Full scan/Overscan, 1:1 pinging to pixel mapping, Aspect ratio selection (16:9 / 4:3 / full screen/ original aspect), color temperature adjustment, H/V Delay, Zoom, Markers, Tally indicator

## Specifications

LCD	
Display Size	42"
Resolution	FULL HD 1920x1080
Aspect Ratio	16 : 9
Viewing Angle	178°(H) / 178°(V)
Pixel Pitch	0.4833x0.4833(mm)
Color Depth	16.7M
Response time	4ms
Back Light	LED
Brightness	500cd/m <sup>2</sup>
Contrast Ratio	1500:1
INPUT	
2 × BNC	SDI1/2 Input (3G/HD/SD-SDI Auto-Detected)
3 × BNC	YPbPr/Video/Y/C
1 × HDMI/DVI/VGA	HDMI/DVI/VGA Input
OUTPUT	
2 × BNC	SDI1/2 Output (3G/HD/SD-SDI Auto-Detected)
1 × BNC	Video
COMPATIBLE SDI FORMATS	
SMPTE-425M	1080P(60/59.94/50)
	1080i(60/59.94/50)
SMPTE-274M	1080i(60/59.94/50)
	1080P(30/29.97/24/25/23.98)
SMPTE-296M	720P(60/59.94/50/30/29.97/25/24/23.98)
SMPTE-260M	1035i(60/59.94)
SMPTE-125M	480i(59.94)
ITU-R BT. 656	576i(50)
Audio In / Out	
SDI Audio In	8 Channel Embedded Audio
Audio Meter Display	H/V Audio Level Meter Display(VU+PPM)
Analog Audio Input	3.5mm Headset Switch Cable
Audio Headset Output	3.5mm Headset Jack
Built-in Speaker	2.5Wx2
GENERAL	
Operating Temperature	-10° ~ 50°
Input Voltage	AC 100-240V 50/60Hz
Power Consumption	205W
Power-Saving Mode	Turn off unimportant key Automatically if no signal input
Unit/Packing Dimension	1010x600x88(mm) / 1170x260x790(mm)
Net/Gross Weight	23.5KG / 29.0KG
VESA Installation	ESA MIS-D(200X200mm)
Accessory	Power Adaptor

\*Specifications may be changed without prior notice.

SHENZHEN KONVISION TECHNOLOGY CO.,LTD

Add: 5/F, Block 1, Zong He Building, Liuxian 1st Road, 71 Zone, Bao'an District, Shenzhen, China.518133

Tel:+86-755-82716021,82924800 Fax:+86-755-61640952

Email:sales@konvision.com Web: www.konvision.com

©KONVISION. All rights reserved.